

04

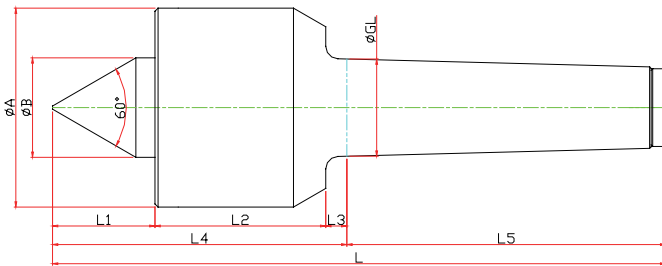
GR · SM-TYPE

LC-GR

- 연마기 전용 라이브센터
- 고정도(0.002), 고하중 지지가능
- Live Center for Grinding machine
- High Precision(0.002) Center for heavy duty



GR-TYPE



Model	Order Number	Morse Taper	Dimension									Weight MAX.	R.P.M MAX.	Run Out
			GL	A	B	L1	L2	L3	L4	L5	L			
LC-4GR	080004	NO.4	31.267	71	40	45	59.5	6.5	111	101.5	212.5	1300	7000	0.002
LC-5GR	080005	NO.5	44.399	88	50	45	66	6.5	117.5	129.5	247	3500	4500	0.002
LC-6GR	080006	NO.6	63.348	114	52	55	92	8	155	182	337	5000	3400	0.002
LC-7GR	080007	NO.7	83.058	200	98	78	132	10	200	250	470	20000	1900	0.002

04

GR · SM-TYPE

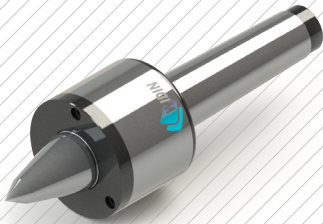
LC-SM

- 고속 회전용 라이브센터
 - 고속 스피들 베어링을 사용
 - SHAFT 경도 HRc58~62
 - RUN OUT 0.003
- Live Center for High Speed Rotation
· Use High Speed Spindle Bearing
· Hardness of SHAFT : HRc58~62
· RUN OUT 0.003



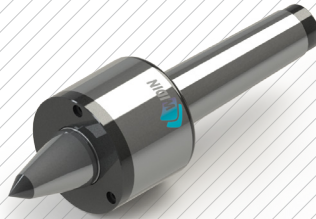
SMB TYPE

바이트 간섭 최소화
Minimize the bite-interference



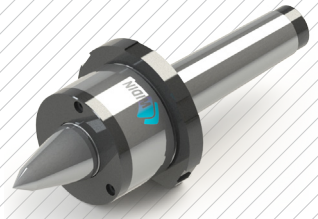
SMBC TYPE

바이트 간섭 최소화 / 초경타입
Minimize the bite-interference / Carbide Type



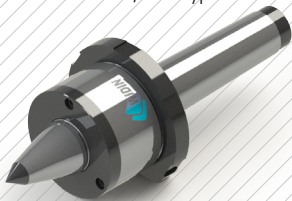
SMBN TYPE

바이트 간섭 최소화 / 너트타입
Minimize the bite-interference / Nut Type



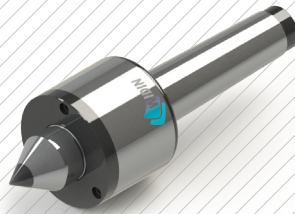
SMBCN TYPE

바이트 간섭 최소화 / 초경, 너트 타입
Minimize the bite-interference / Carbide, Nut Type



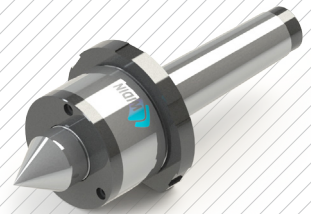
SMC TYPE

초경타입
Carbide Type



SMN TYPE

너트타입
Nut Type



SMCN TYPE

초경, 너트타입
Carbide, Nut Type

